

# The Analytics Easy Button

How to Deploy ClickHouse<sup>®</sup>  
Services with Terraform,  
Helm, or Argo CD

Josh Lee - Altinity Developer Advocate  
Robert Hodges - Altinity CEO



## A brief message from our sponsor...

### Robert Hodges

Database geek with 40+ years on DBMS. Kubernaut since 2018. Day job: Altinity CEO

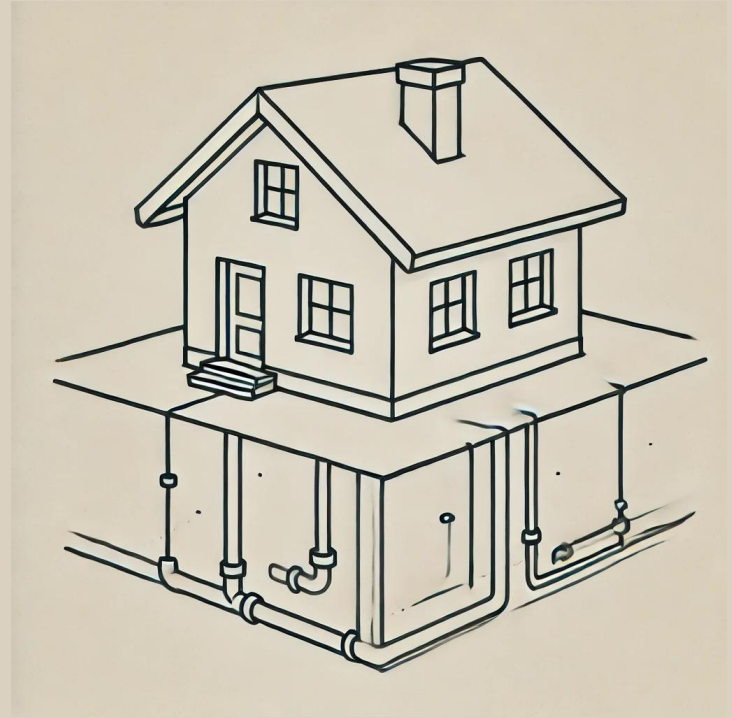
### Josh Lee

Obsessed with Open Source & Observability. SQL was my second language.



ClickHouse software and services: [Altinity.Cloud](#) and [Altinity Stable Builds](#)  
Authors of [Altinity Kubernetes Operator for ClickHouse](#)

# What's in a Platform?





# Applications

---

## Platform



## Applications

---

## Platform Applications

---

## Infrastructure





Applications

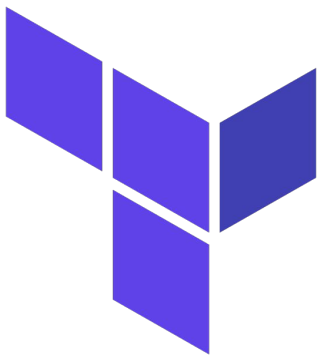


Platform Applications



Infrastructure





# Terraform for Infrastructure

Strict state management for semi-permanent entities:  
VMs, clusters, operators, managed services



## Helm for App Definitions

Combine with:

- Terraform Helm Provider
- ArgoCD





## Argo for managing apps

Easy-to-use API with CRDs and app-of-apps pattern.

*Uses Helm for inflating templates only...*

- ▼ argo-apps
  - ▼ templates
    - grafana.yaml
    - otel-collector.yaml
  - > values
    - Chart.yaml
  - .gitignore
  - .terraform.lock.hcl
  - README.md
  - TODO.md
  - argocd.tf
  - main.tf

App Definitions  
(Argo CRDs)

Parent Application  
(plain helm chart)

Code Blame 27 lines (26 loc) · 651 Bytes

Raw 📄 ⬇️ ✎ ⌵ ⌵

```
1
2 apiVersion: argoproj.io/v1alpha1
3 kind: Application
4 metadata:
5   name: grafana
6   namespace: argocd
7   annotations:
8     argocd.argoproj.io/sync-wave: "1"
9 spec:
10  destination:
11    namespace: default
12    server: https://kubernetes.default.svc
13  project: default
14  sources:
15    - chart: grafana
16      repoURL: https://grafana.github.io/helm-charts
17      targetRevision: 8.3.4
18      helm:
19        valueFiles:
20          - $values/argo-apps/values/grafana.yaml
21    - repoURL: 'https://github.com/joshleecreates/clickhouse-opentelemetry-iac.git'
22      targetRevision: main
23      ref: values
24  syncPolicy:
25    automated:
26      selfHeal: true
27      prune: true
```

3rd-Party Helm Chart  
with custom values

# ClickHouse is a real-time analytic database

Understands SQL

Runs on bare metal to cloud

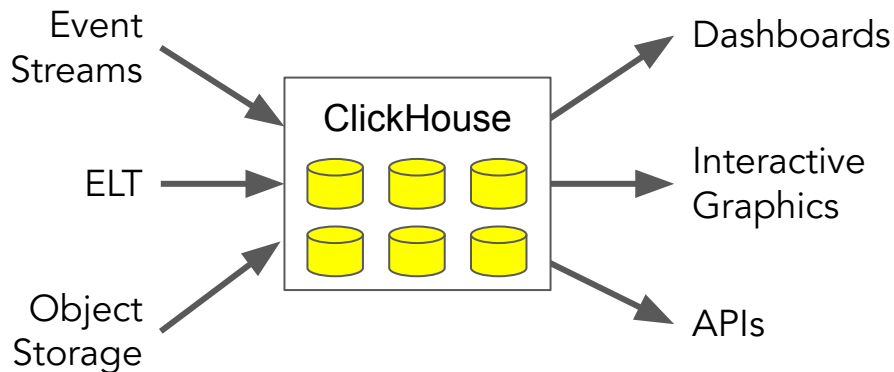
Shared nothing architecture

Stores data in columns

Parallel and vectorized execution

Scales to many petabytes

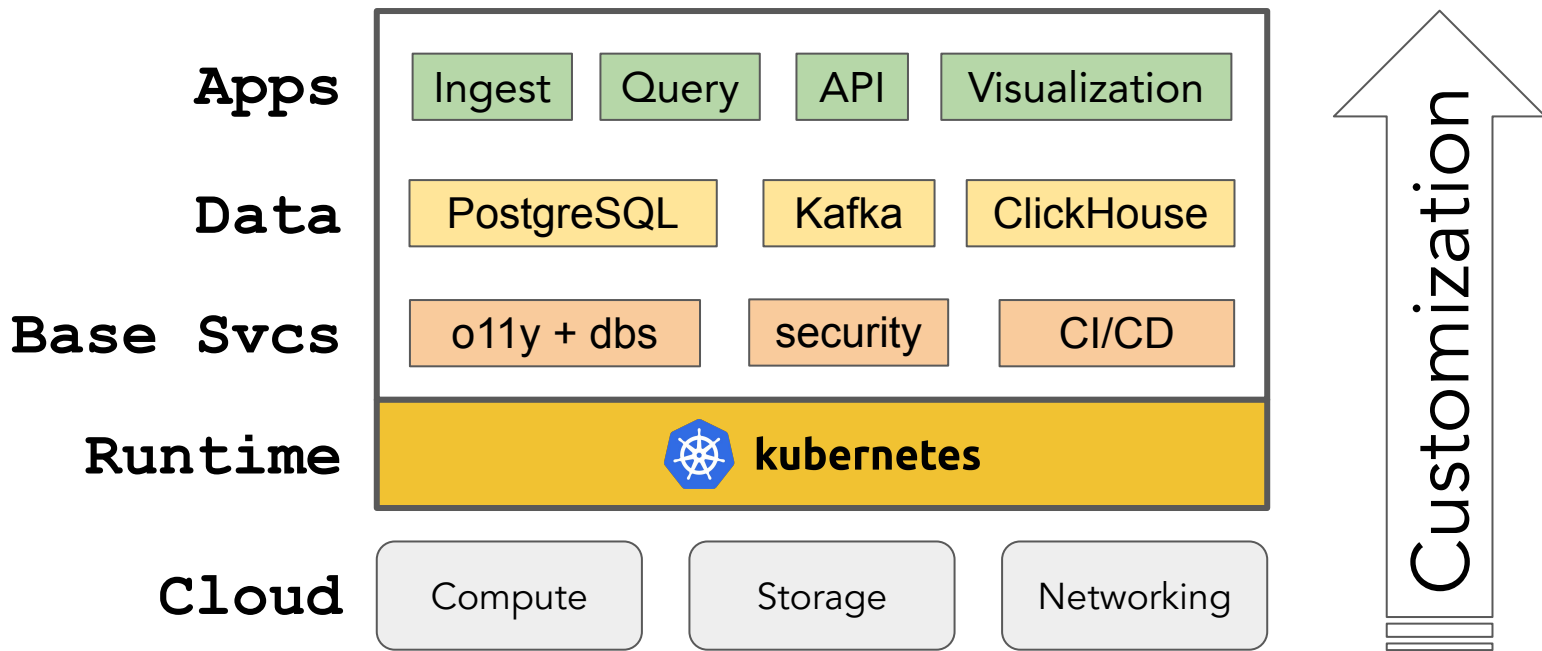
Is open source (Apache 2.0)



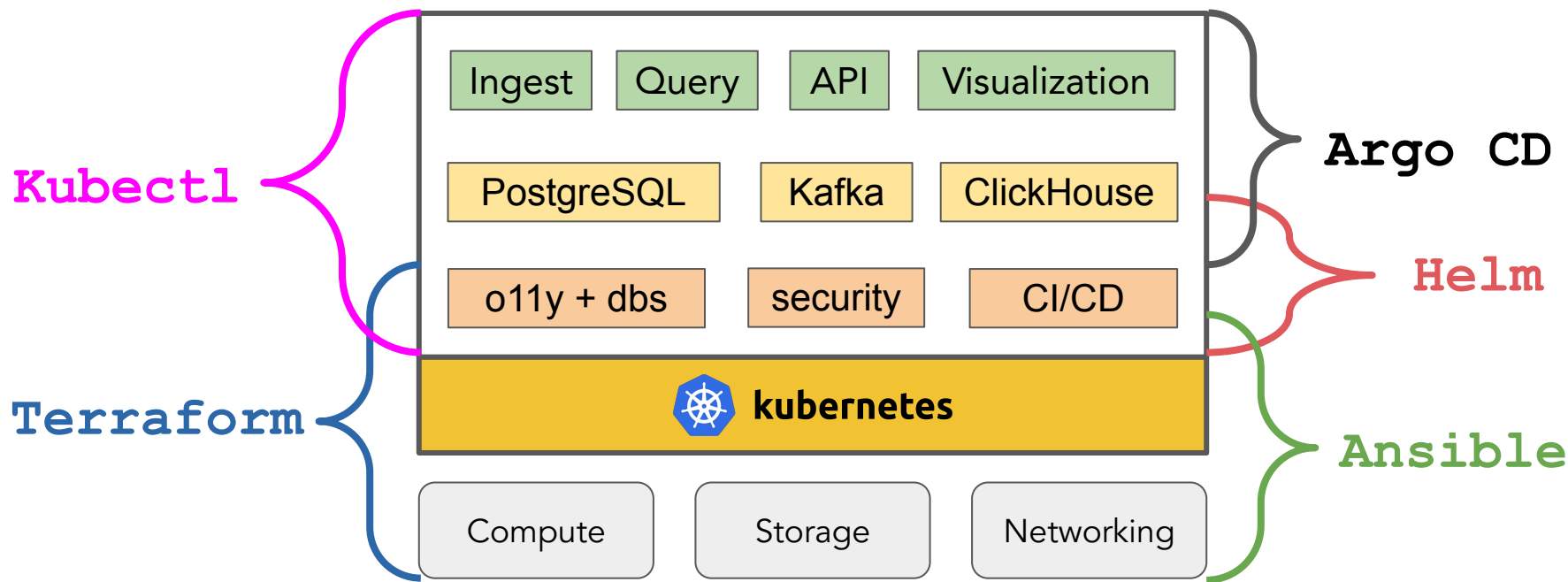
It's the core engine for  
low-latency analytics

A platform is like a parfait...

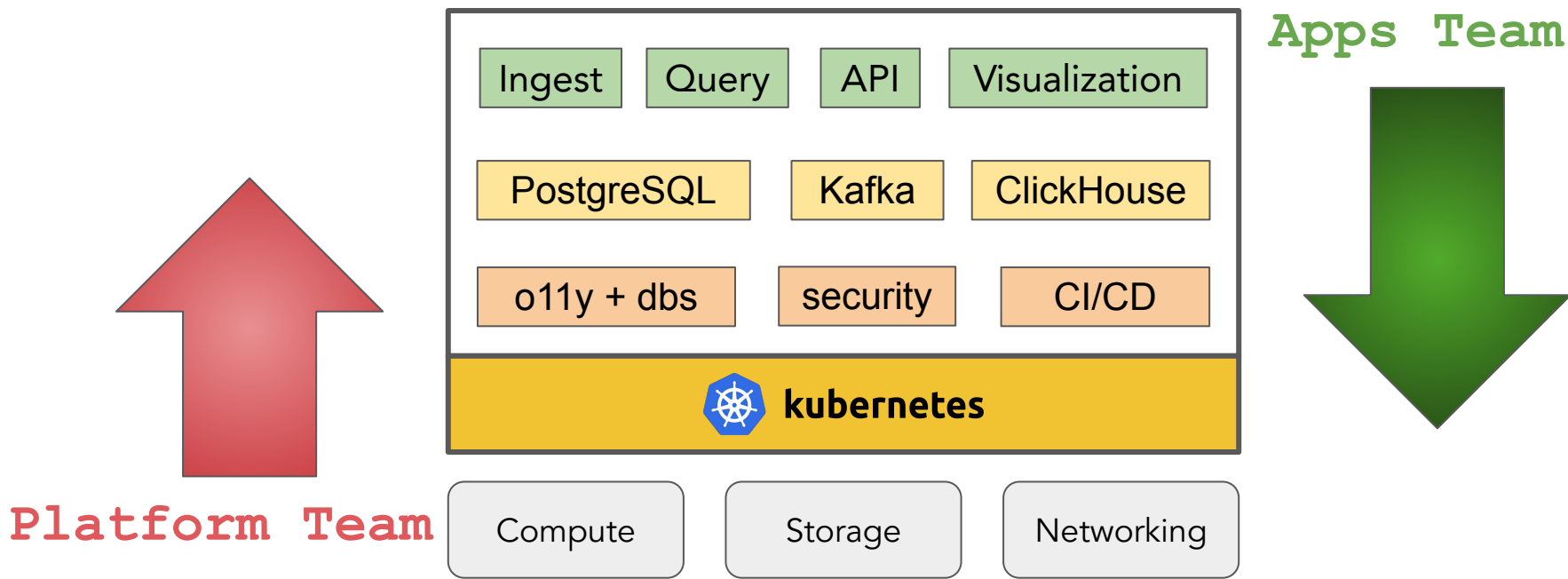
Data platform == custom stack to solve business problem



# Different knowledge/tools for different parts of the stack



# Kubernetes encourages app vs. platform “functions”

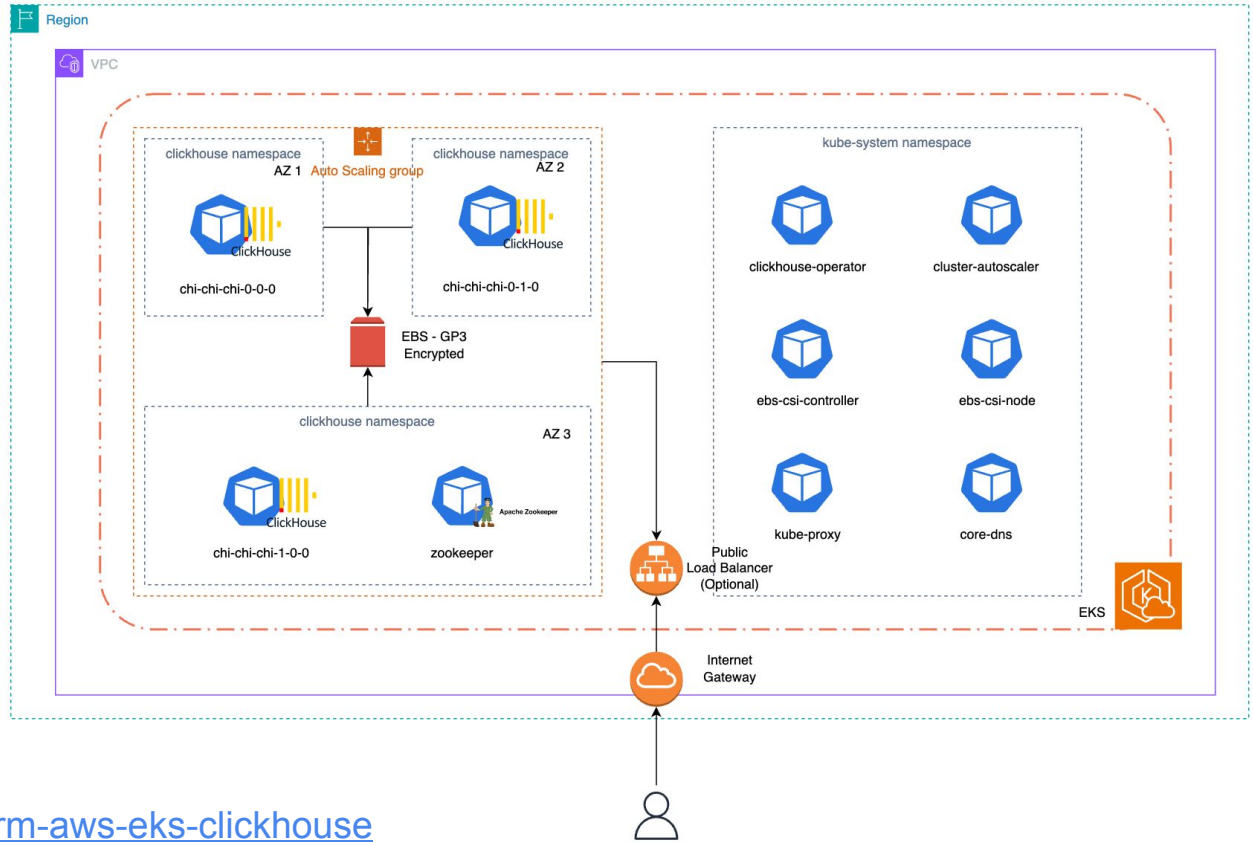


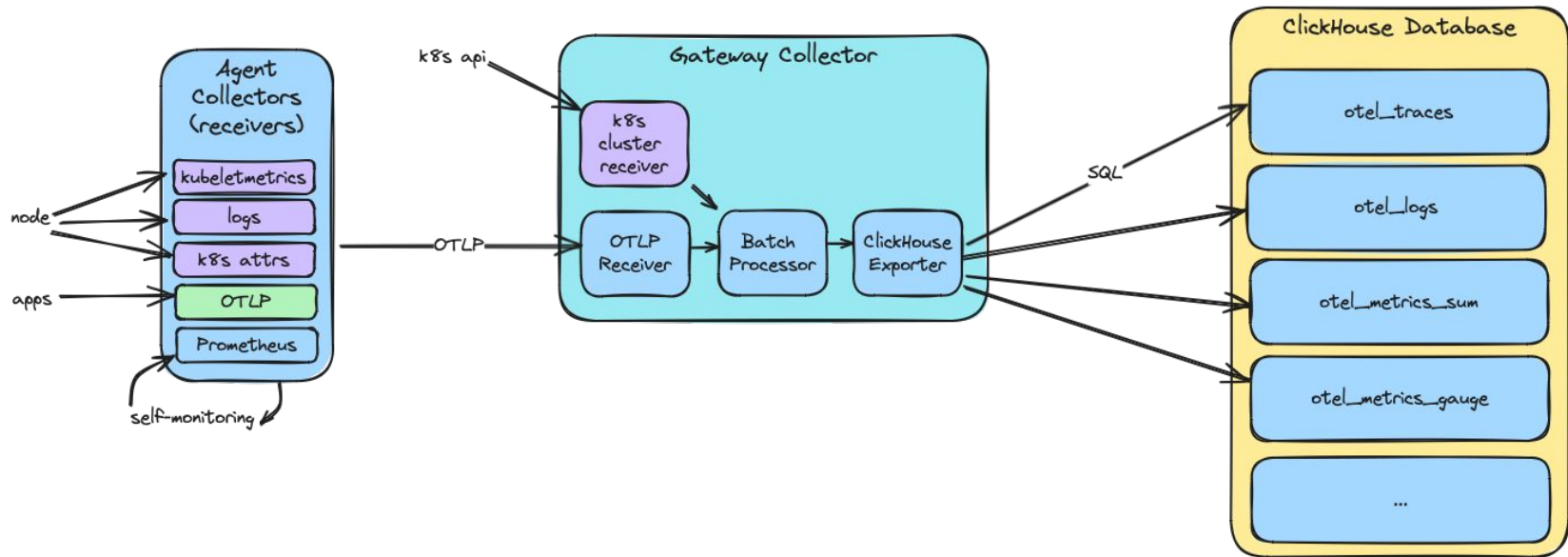


# Altinity EKS Terraform Module for ClickHouse

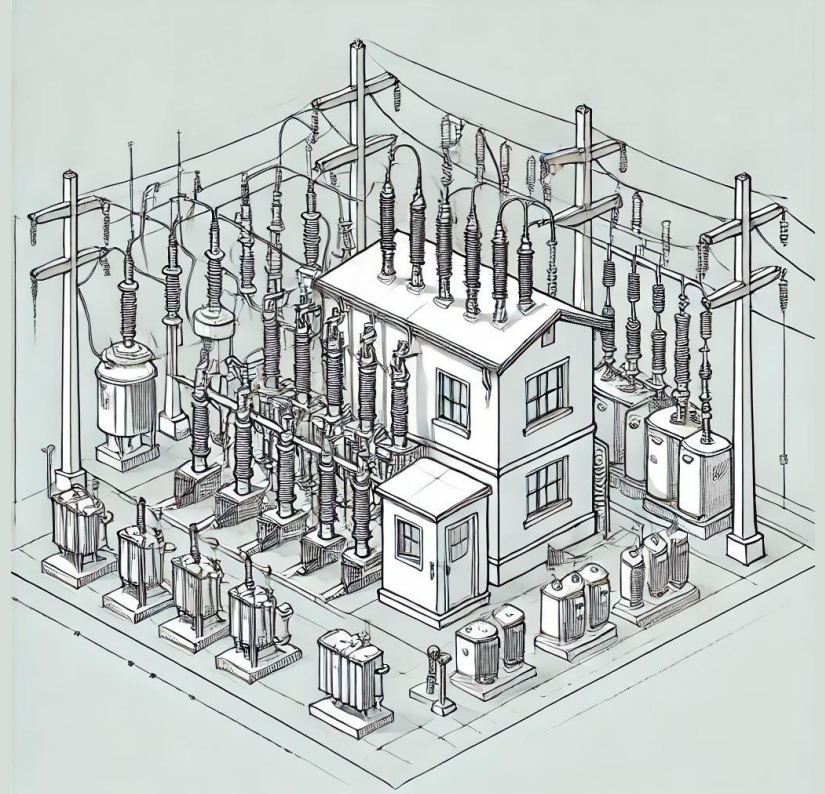


<https://github.com/Altinity/terraform-aws-eks-clickhouse>





# Managed Services



# Why introduce a managed service for ClickHouse?

## Going it alone

Databases have a steep learning curve

Database automation is time-consuming to develop

Failures can bring down your business

## Using a Service

Spend less time learning tech and fewer mistakes

Spend more time on application features

Make them somebody else's problem

# Altinity.Cloud is a zero-maintenance SaaS for ClickHouse

Full automation of operations with baked in DBA support

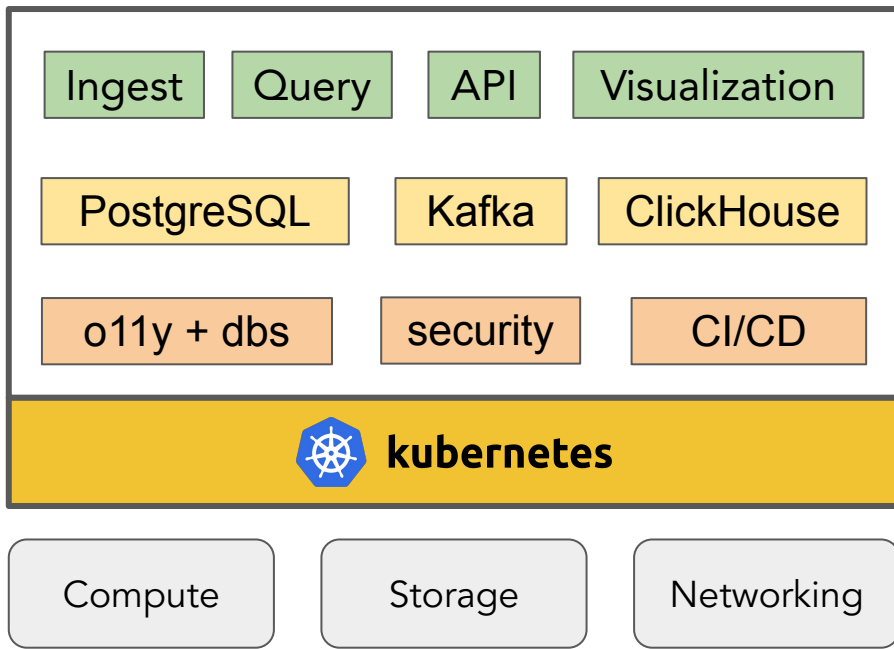


Cost and performance optimized for real-time analytics

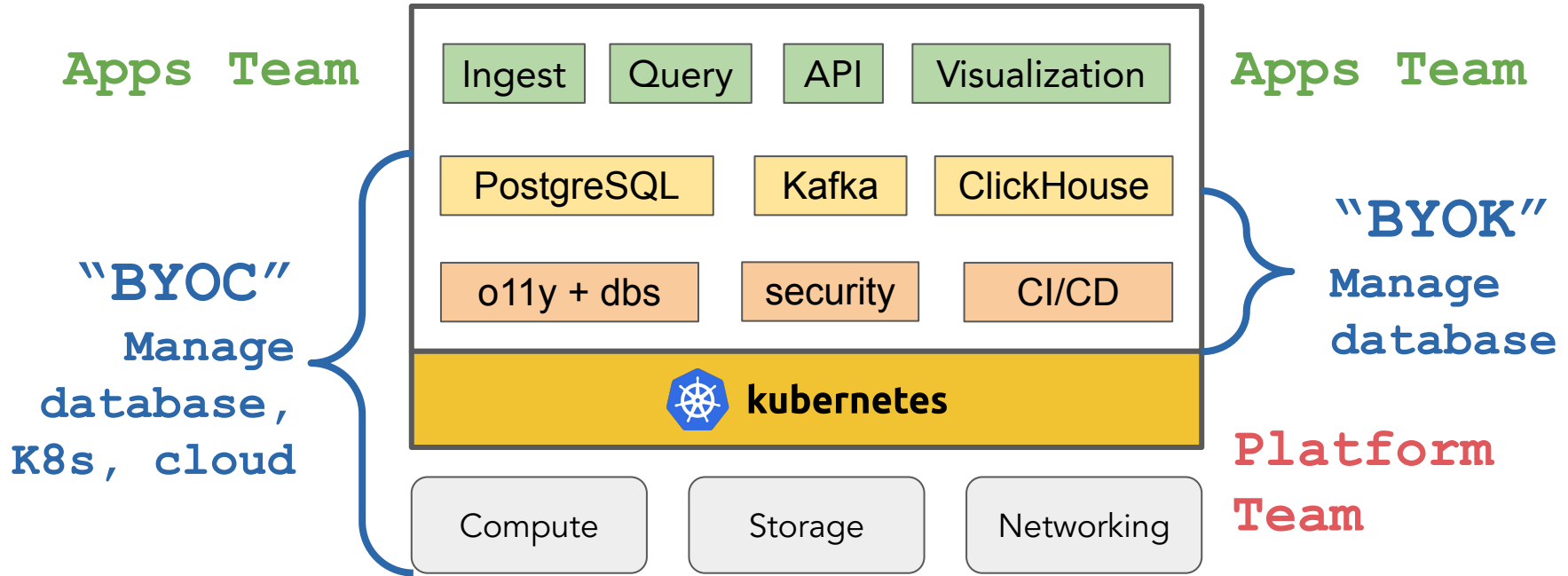
Supports all versions and features of ClickHouse (also experimental ones!)

Run in AWS/GCP/Azure region or your own Kubernetes clusters

# How can we add managed services in your stack?

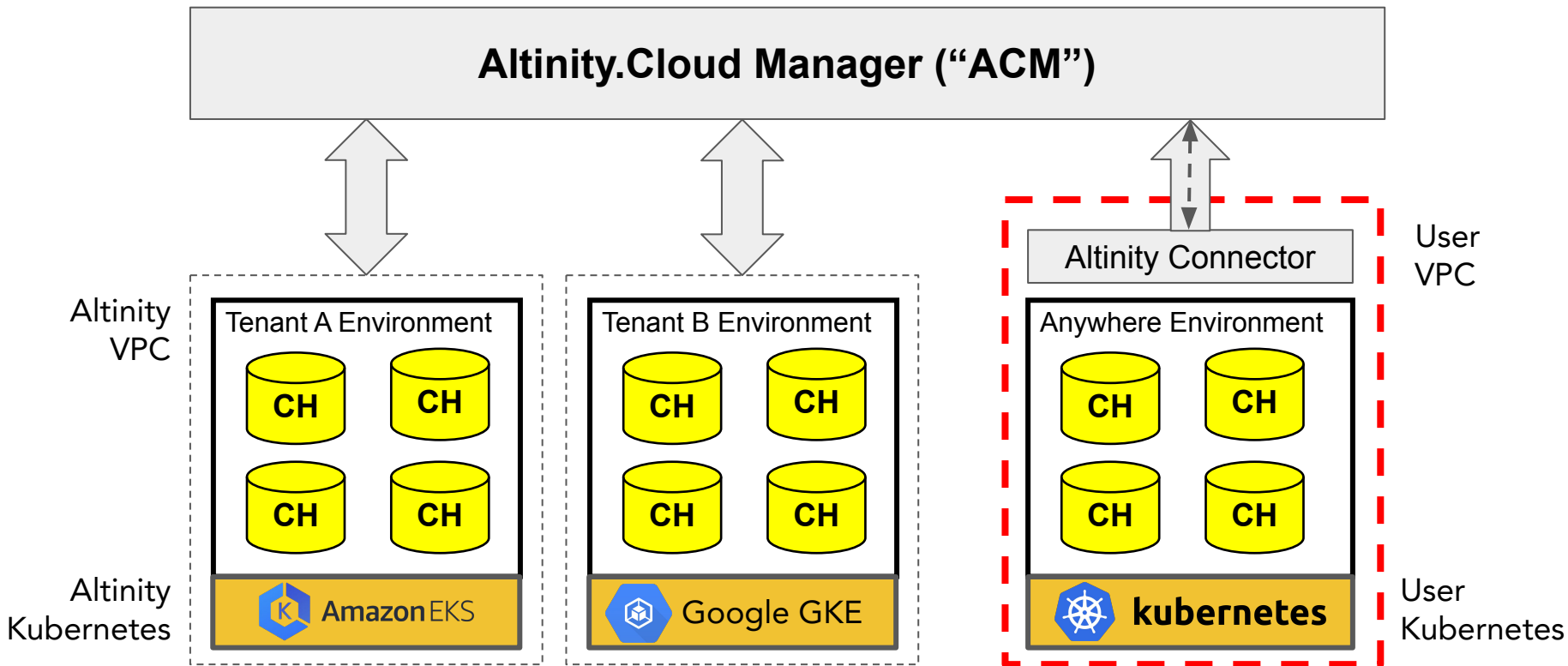


# Bring your own cloud vs. Bring your own Kubernetes

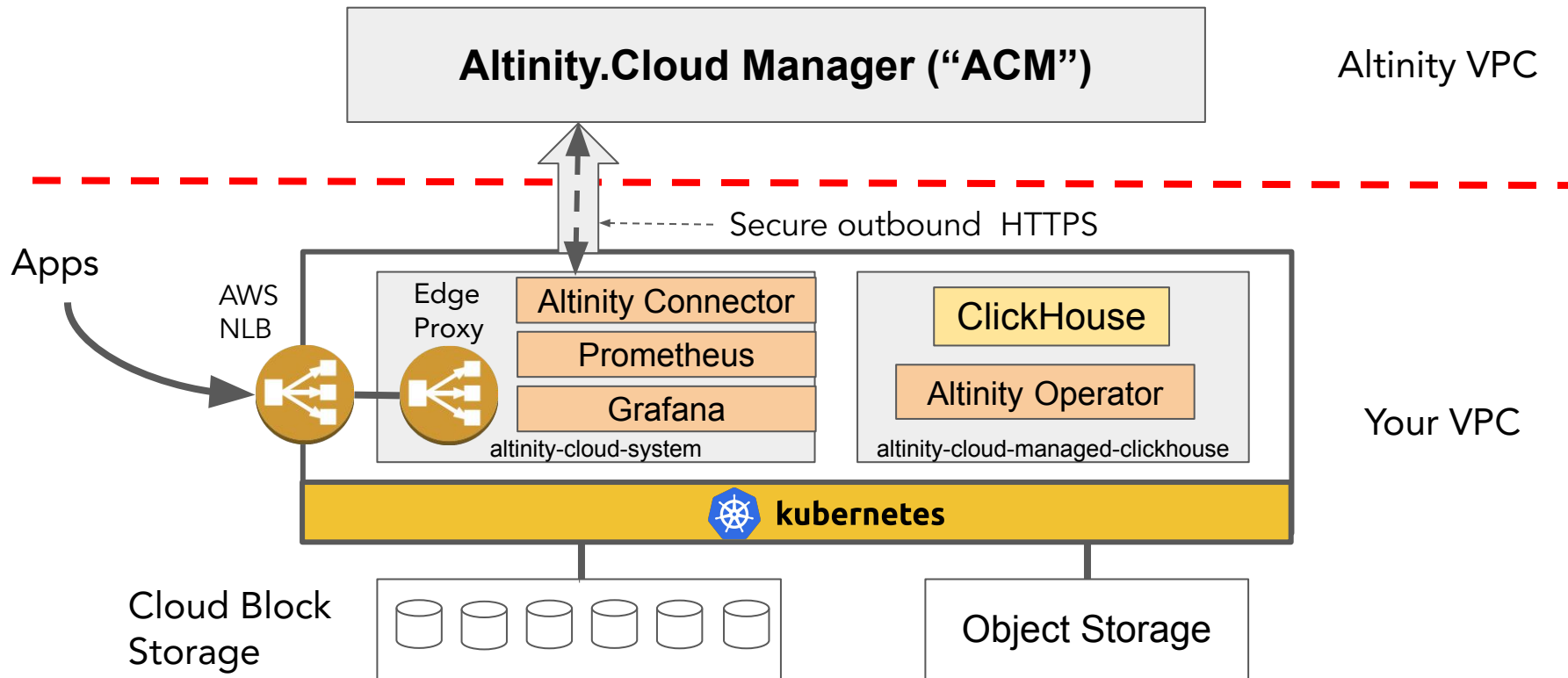




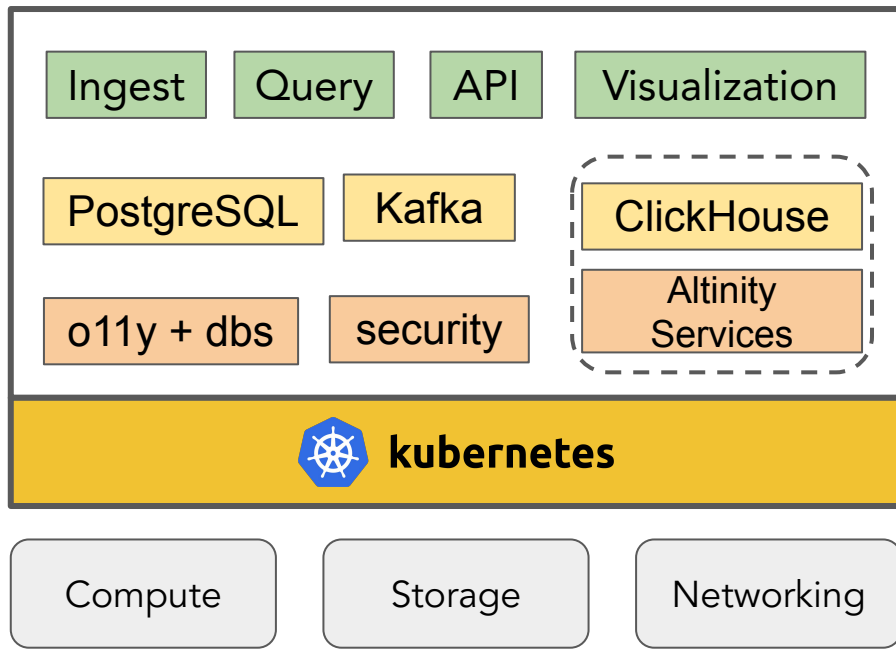
# Altinity.Cloud “Anywhere” can run in your Kubernetes



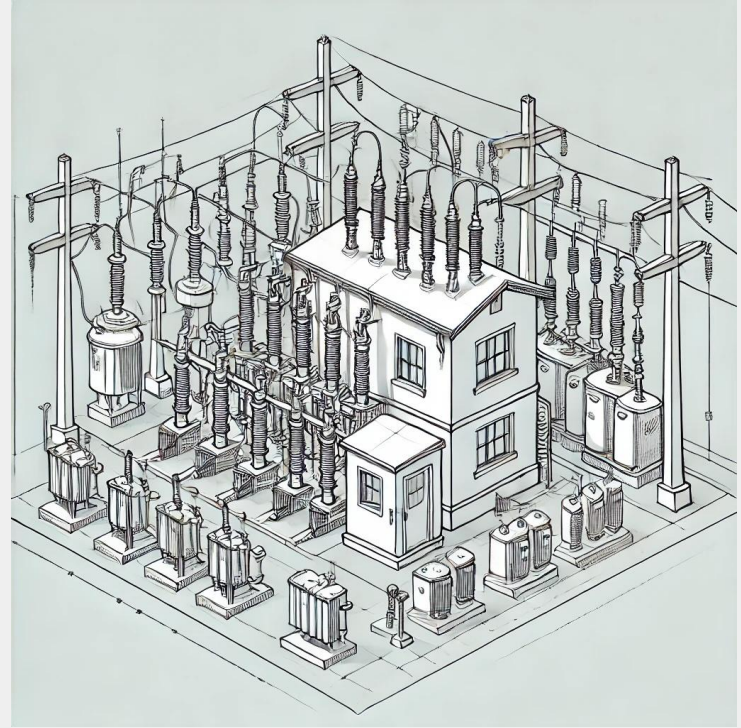
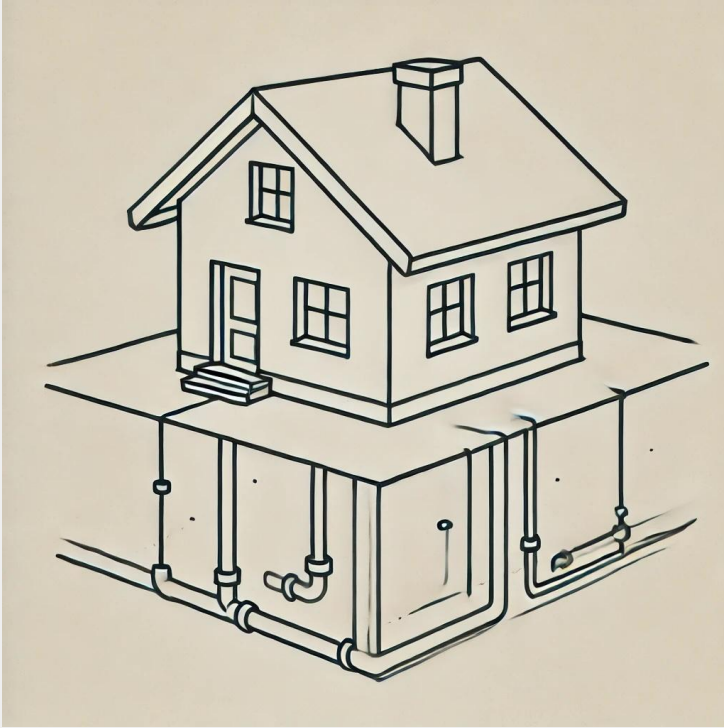
# How does Altinity.Cloud work internally?



# How Altinity.Cloud fits into your data platform



# Wrapping up



# Building a Kubernetes platform for data using ClickHouse

- Use Terraform to set up cloud infrastructure and Kubernetes
- Use Helm or Argo CD to deploy platform and user applications
- Altinity.Cloud can manage ClickHouse inside your Kubernetes

More information:

- Altinity.Cloud Docs: <https://docs.altinity.com/altinitycloud/>
- Altinity GitHub: <https://github.com/Altinity>
- Altinity blog: <https://altinity.com/blog>
- Altinity YouTube: <https://www.youtube.com/c/altinityltd>

# Thank you!

Our website

<https://altinity.com>

Join the Altinity Slack!

<https://altinity.com/slack>

Psst...  
We're  
hiring →

